



IL-1F10 Polyclonal Antibody

Catalog No	YP-Ab-16078
Isotype	IgG
Reactivity	Human;Rat;Mouse;
Applications	WB;IHC;IF;ELISA
Gene Name	IL1F10
Protein Name	Interleukin-1 family member 10
Immunogen	Synthesized peptide derived from Interleukin-1 family member 10 at AA range: 101-150
Specificity	IL-1F10 Polyclonal Antibody detects endogenous levels of IL-1F10 protein.
Formulation	Liquid in PBS containing 50% glycerol, 0.5% BSA and 0.02% sodium azide.
Source	Polyclonal, Rabbit,IgG
Purification	The antibody was affinity-purified from rabbit antiserum by affinity-chromatography using epitope-specific immunogen.
Dilution	WB: 1/500 - 1/2000. IHC-p: 1:100-1:300. ELISA: 1/10000.. IF 1:50-200
Concentration	1 mg/ml
Purity	≥90%
Storage Stability	-20°C/1 year
Synonyms	IL1F10; FIL1T; IL1HY2; FKSG75; Interleukin-1 family member 10; IL-1F10; FIL1 theta; Interleukin-1 HY2; IL-1HY2; Interleukin-1 theta; IL-1 theta
Observed Band	17kD
Cell Pathway	Cytoplasm . Secreted . The secretion is dependent on protein unfolding and facilitated by the cargo receptor TMED10; it results in protein translocation from the cytoplasm into the ERGIC (endoplasmic reticulum-Golgi intermediate compartment) followed by vesicle entry and secretion. .
Tissue Specificity	Expressed in fetal skin, spleen and tonsil. Expressed mostly in the basal epithelia of skin and in proliferating B-cells of the tonsil.
Function	function: Binds soluble IL-1 receptor type 1.,online information:Interleukin-1 entry,similarity:Belongs to the IL-1 family.,tissue specificity:Expressed in fetal skin, spleen and tonsil. Expressed mostly in the basal epithelia of skin and in proliferating B-cells of the tonsil.,
Background	The protein encoded by this gene is a member of the interleukin 1 cytokine family. This gene and eight other interleukin 1 family genes form a cytokine gene cluster on chromosome 2. This cytokine is thought to participate in a network of interleukin 1 family members to regulate adapted and innate immune responses. Two alternatively spliced transcript variants encoding the same protein have been reported. [provided by RefSeq, Jul 2008],



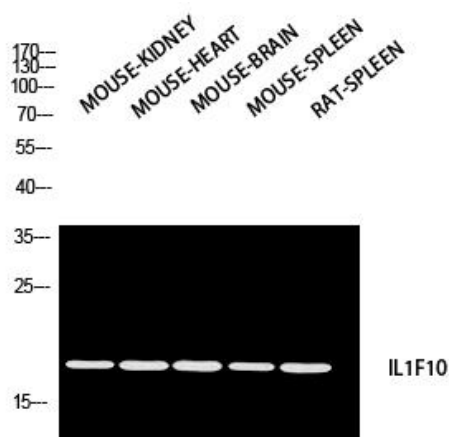
matters needing attention

Avoid repeated freezing and thawing!

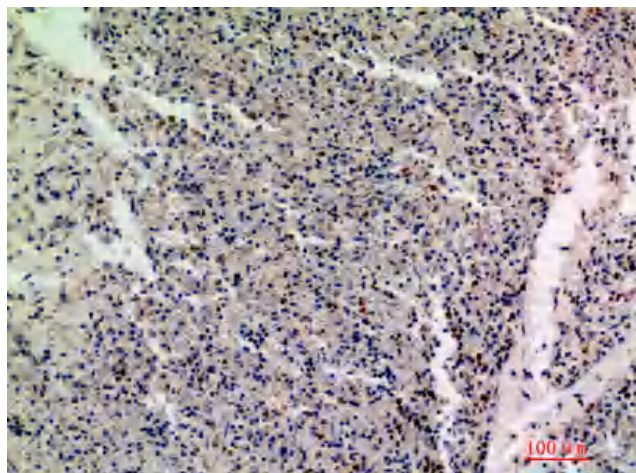
Usage suggestions

This product can be used in immunological reaction related experiments. For more information, please consult technical personnel.

Products Images



Western blot analysis of MOUSE-KIDNEY
MOUSE-HEART MOUSE-BRAIN MOUSE-SPLEEN
RAT-SPLEEN using IL1F10 antibody. Antibody was diluted at 1:2000. Secondary antibody(catalog#:RS0002) was diluted at 1:20000



Immunohistochemical analysis of paraffin-embedded human-spleen, antibody was diluted at 1:200